



# WAVELENGTHS

*The Newsletter of the Southern  
Association of Marine Educators  
in Alabama, Louisiana, and Mississippi*  
April 11, 2008

*Making known the world of water, both fresh & salt*

## President's Letter

Hello, SAME Members!



Happy Spring everyone! I hope you all are enjoying the warming temperatures, the chirping birds and all those beautiful blooms! Or at least you will after you get over all the unfortunate sneezing and watery eyes brought on by such awesome Spring beauty.

The National Marine Educators Association conference: *One World, One Water* in Savannah, GA is less than four months away! I hope you will join us at the Savannah Marriott Riverfront July 21-24, 2008 to experience presentations on cutting-edge research and innovative education. We will get to explore the beautiful Georgia coastline with field trips to Tybee Island and historic downtown Savannah that will introduce us to the local environment. Come experience The International Year of the Reef, Ocean Literacy, fisheries, and southeastern estuarine ecosystems. Check out the conference link for more information. <http://www.nmeaweb.org/savannah2008/>

Congratulations to Belinda Matlock, a teacher from Lamar Elementary in Meridian, MS! She is the recipient of the SAME scholarship, which provides registration to the NMEA conference. We will be hearing about her experiences in the Fall newsletter.

If you have anything you would like to contribute to the SAME Chapter Basket for auction at the NMEA conference, please let me know. If you won't be attending NMEA this year, but would like to donate an item, you can send it to me at 101 Bienville Blvd, Dauphin Island, AL 36528. If you are attending, just bring it with you and we'll meet up to put the Chapter Basket together. Please consider attaching a note of how and why this item relates to our region. This auction benefits the NMEA scholarships. The deadline for getting items to me is June 30, 2008.

Mark your calendars: The SAME annual conference is scheduled for November 14-16, 2008 at the Dauphin Island Sea Lab. This will be a joint meeting with COSEE:CGOM. Hope to see you there.

Enjoy the Spring!  
Joan Turner



## 12<sup>th</sup> Annual Save Our Lake & Coast Fishing Rodeo

### Back to the Beach Festival

The 19<sup>th</sup> Annual Back to the Beach Festival is excited to kick off the summer on May 30<sup>th</sup>, May 31<sup>st</sup> and June 1<sup>st</sup>. It will be held on Lake Pontchartrain in Laketown (end of Williams Blvd. in Kenner). As the LPBF's primary fundraiser, the festival offers a ½ mile and 2 mile run/walk on Friday, an exciting car show on Sunday, an awesome line up of bands, arts & crafts, great food and fun for the whole family!

Admission is \$8 for adults, \$4 for children under 12. For more information please visit our website at [http://www.saveourlake.org/back\\_to\\_beach.htm](http://www.saveourlake.org/back_to_beach.htm)

The Lake Pontchartrain Basin Foundation's 12<sup>th</sup> Annual Save Our Lake Fishing Rodeo is casting off soon. Grab your rod and reel for 2 days of fishing and family fun on Saturday, May 17<sup>th</sup> and Sunday, May 18<sup>th</sup>, 2008.

Participants are welcome to fish anywhere in the Pontchartrain Basin. If you think you've caught a winner, you can weigh in at our weigh station, Seabrook Harbor.

Bring your lawn chairs, blankets and picnic snacks and join Chairman Dwight Montz (Seabrook Harbor) and Honorary Chairman Kevin Houser (New Orleans Saints) at our Awards Picnic at Seabrook Harbor. Participants will enjoy fantastic food provided by Outback Steakhouse and beverages. Master of Ceremonies, Don Dubuc will be on hand to present awards to the winners. We'll have lots of great door prizes!

Tickets are only \$25 for adults and \$10 for children under 16. Each ticket includes one entry into the rodeo and awards picnic, a rodeo t-shirt, a one-year membership to the Lake Pontchartrain Basin Foundation and two tickets to the Back to the Beach Festival on May 30, May 31 and June 1!

All proceeds from the rodeo will benefit the LPBF. For more information on how to join in the rodeo or become a sponsor, please call (504) 836-2205

or visit our website at

[http://www.saveourlake.org/back\\_to\\_lake.htm](http://www.saveourlake.org/back_to_lake.htm).

**LAKE PONTCHARTRAIN BASIN FOUNDATION**  
**SAVE OUR COAST SAVE OUR LAKE**



<http://beyondpenguins.nsdli.org/issue/index.php?date=March2008>

To fill a national void in the elementary school curriculum and capitalize on student interest in the polar regions, Ohio State University and the National Science Digital Library (NSDL) have launched a new online magazine for teachers in the early grades.

Submitted by: Johnette D. Bosarge  
Administrative Assistant  
National Marine Educators Association

## NMEA 2008 Annual Conference Update



The National Marine Educators Association 2008 Annual Conference will be conducted from July 21-24 in Savannah, GA. The full Conference registration fee includes all meals and special events throughout the three days of concurrent sessions, invited speakers, music, entertainment, and evening opportunities to “kick off your shoes and mingle.” Full and single day registration fees are valid through June 1. Late registration will begin June 2 and will not include meals or special events. Field trip and workshop fees are the only added cost. A wide range of walking, boating, and paddling trips will offer opportunities to “go with the coastal flow” and experience the history and beauty of Georgia’s wild coast. For conference information, [www.nmeaweb.org](http://www.nmeaweb.org) is a “one-stop shop” for NMEA members and features information, registration, lodging, field trips, speakers, schedules, and much more.

Submitted by: Angela Capello, Biologist Supervisor  
Booker Fowler Fish Hatchery

## WETSHOP 2008



**A WETLAND WORKSHOP THAT INTRODUCES EDUCATORS TO THE  
IMPORTANCE OF LOUISIANA’S COAST, WETLAND LOSS AND RESTORATION**

**JUNE 16 - 20, 2008**

**LOUISIANA DEPT. OF WILDLIFE & FISHERIES**

**To be held at: Galliano NRCS Plant Materials Center, LUMCON, Grand Terre**

**WORKSHOP IS OPEN TO ALL SCIENCE/HISTORY TEACHERS**

### **EXPERIENCE:**

- Fishing
- Seining
- Trawling
- Coastal Botany
- Coastal Ornithology
- Visit barrier islands
- Water Quality Testing
- Visit Brown Pelican Rookery
- Visit transitional coastal ecosystems

### **RECEIVE:**

- Wonders of Wetlands Teacher Guidebook
- Numerous Wetlands Classroom Resources
- 40 Contact Hours of Professional Development

### **EXPECTATIONS:**

- Educators will receive a \$250.00 stipend. In return, educator is obligated to teach a six-hour coastal workshop in their parish.
- Classroom resources will be provided for parish workshops.
- WETSHOP registration fee of \$50.00 is required.

**SEND REQUEST TO ATTEND PLUS REGISTRATION FEE  
TO:**

**Angela Capello, Biologist Supervisor  
10 Joan Stokes Rd.  
Forest Hill, LA 71430  
318/748-6999  
fax 318/748-6930  
[acapello@wlf.louisiana.gov](mailto:acapello@wlf.louisiana.gov)**



Submitted by: Amy LeGaux  
Disaster Recovery Coordinator  
Audubon Nature Institute



## Audubon Nature Institute hosts Louisiana Youth Environmental Summit (Louisiana YES!)

Audubon Nature Institute is sponsoring the 11<sup>th</sup> annual Louisiana Youth Environmental Summit. The intensive three-day summit will be held Tuesday, July 22 through Friday, July 25, 2008 at Tickfaw State Park in Springfield (Louisiana) for students entering 8<sup>th</sup>-11<sup>th</sup> grades in the 2008-2009 school year. The theme of this year's summit is "Climate Change in Louisiana." Applications are available on line at [www.auduboninstitute.org/layes](http://www.auduboninstitute.org/layes).

Louisiana YES selects students and their adult mentors to join dynamic speakers such as educators, scientists, policy makers, regulators, and special guests to discuss environmental issues and actions. Students from Natchitoches, Lafourche, Sabine, Caldwell, St. Tammany, Jefferson, Orleans and St. Charles parishes have been past participants.

Students will work with Audubon Nature Institute staff to brainstorm and develop environmental projects which the students can continue throughout the year in their own communities. After the summit, students can apply for grants to provide financial assistance with their projects.

Students are mentored by students from previous years, and receive a resource binder produced by Audubon Nature Institute. Each student is then responsible for taking what they have learned and creating and implementing an environmental project in their home town or parish.

Audubon Nature Institute operates nine parks and museums in New Orleans dedicated to *Celebrating the Wonders of Nature*, including Audubon Zoo, Audubon Aquarium of the Americas, Entergy IMAX<sup>®</sup> Theatre, Audubon Center for Research of Endangered Species, Freeport-McMoRan Audubon Species Survival Center, Wilderness Park, Woldenberg Riverfront Park and Audubon Park. Audubon Louisiana Nature Center is located in New Orleans East and remains closed due to damage to the buildings and grounds. Its 10<sup>th</sup> facility, Audubon Insectarium is scheduled to open in 2008.

For more information about Audubon Nature Institute's Louisiana Youth Environmental Summit or to download an application visit [www.auduboninstitute.org/layes](http://www.auduboninstitute.org/layes).

### Coastal Researcher, PIES Director Shea Penland Dead at Age 54



As you may have heard, we are mourning the loss of our Pontchartrain Institute director Shea Penland who passed away on Tuesday, March 25, 2008. For those who knew him and of his work, you will appreciate the enormous contribution he made to coastal science but also the vital work he did for educating everyone about Louisiana's coastal issues. Our education program is at UNO because of his recognition of the importance of education. His death is a great loss for all of us.

Please go to this link below to learn more about his life and work.  
[http://news.uno.edu/Public/Index.asp?page\\_id=30&Content\\_ID=706](http://news.uno.edu/Public/Index.asp?page_id=30&Content_ID=706)

Dinah Maygarden  
Coastal Education Program  
Pontchartrain Institute for Environmental Sciences  
University of New Orleans

Submitted by: Michael Carley  
Research Associate  
J.L. Scott Marine Education Center



**GULF COAST  
RESEARCH LABORATORY**  
THE UNIVERSITY OF SOUTHERN MISSISSIPPI

## **CSI: Coastal Sciences Investigation career camp offered for teens**

OCEAN SPRINGS—J.L. Scott Marine Education Center is offering a new summer career camp for teens ages 15-18 and is now accepting registration.

The CSI: Coastal Sciences Investigation Camp will be held at the J.L. Scott Marine Education Center, located at The University of Southern Mississippi Gulf Coast Research Laboratory (GCRL) in Ocean Springs.

"The new Coastal Sciences Investigation (CSI) camp is an excellent opportunity for high school students to get hands-on career orientation and interaction with scientists in various marine-related disciplines," said Michael Carley, coordinator of summer camps.

"This camp promises to be an immersive experience. Participants will work in small groups with GCRL scientists both in the field and in the laboratory."

CSI camp will be offered June 2-6 and July 28-Aug. 1.

Cost per week is \$490 and include official CSI: Coastal Sciences Investigation field wear--t-shirt and cap, all instructional costs and materials, admission fees and field trips. The five-day sessions run 8 a.m. until 4:30 p.m.

"The CSI Camp is important because it provides an engaging atmosphere for students interested in marine sciences to receive information that can steer them toward a fulfilling and meaningful career," said Carley.

To register or for more information, call (228) 818-8890 or email [marine.education@usm.edu](mailto:marine.education@usm.edu).

The J.L. Scott Marine Education Center is the public education and outreach arm of GCRL.

Located on the Gulf of Mexico, the Gulf Coast Research Laboratory focuses on sustainable coastal and marine resources, development of new marine technologies and the education of future scientists and citizens. The GCRL is home to the Department of Coastal Sciences, the J.L. Scott Marine Education Center, the Center for Fisheries Research and Development and the Thad Cochran Marine Aquaculture Center. It is in the university's School of Ocean and Earth Sciences, College of Science and Technology. More information can be found at [www.usm.edu/gcrl](http://www.usm.edu/gcrl).

Submitted by: Michael Carley  
Research Associate  
J.L. Scott Marine Education Center



**J.L. SCOTT**  
Marine Education Center

# Sea Camp 2008

## opens registration

[www.usm.edu/marineeducation](http://www.usm.edu/marineeducation)

OCEAN SPRINGS—J.L. Scott Marine Education Center is now accepting registration for Sea Camp 2008. Sporting a Science in the Sound theme, the popular marine science day camp for ages 6-14 will be held at the J.L. Scott Marine Education Center, located at The University of Southern Mississippi Gulf Coast Research Laboratory (GCRL) in Ocean Springs.

Sea Camp will be offered June 9-13, June 16-20, June 23-27, July 7-11, July 14-18 and July 21-25. Sessions for ages six through nine are available all of those weeks; sessions for ages 10-12 are available the weeks of June 9, 16, and 23 only. Sessions for ages 13-14 include kayaking and are available the weeks of June 23, July 7 and 14.

"This marks our 21<sup>st</sup> year of Sea Camp," said Michael Carley, coordinator of summer camps. "It is an exciting, fun and sun filled learning opportunity that children, parents and grandparents look forward to year after year."

Cost per week is \$210 for ages 6-7, \$235 for ages 8-12, and \$275 for ages 13-14. Prices include camp t-shirt, individual and group photos, all instructional costs and materials, admission fees, field trips and art supplies. The five-day sessions run 8:30 a.m. until 3:30 p.m.

"Campers will experience discovery through hands-on activities and live animal encounters," explained Carley. "They will crab, fish, seine and sieve." Field trips will also take participants into beach and saltmarsh habitats.

"Children of all ages visit Deer Island aboard the *R/V Sea Explorer*," said Carley. "Additionally, campers ages 8-14 get to spend a day at Ship Island."

Teen-aged students will have an added adventure, kayaking through the maritime forests of Bayou Heron and exploring Indian middens and salt pannes of near-shore islands at Grand Bay National Estuarine Research Reserve in Moss Point.

"We look forward to sharing a fun-filled summer with new and returning campers," Carley said.

Registration forms are also available online at [www.usm.edu/marineeducation](http://www.usm.edu/marineeducation). For more information, call (228) 818-8890 or email [marine.education@usm.edu](mailto:marine.education@usm.edu).

The J.L. Scott Marine Education Center is the public education and outreach arm of GCRL.

Located on the Gulf of Mexico, the Gulf Coast Research Laboratory focuses on sustainable coastal and marine resources, development of new marine technologies and the education of future scientists and citizens. The GCRL is home to the Department of Coastal Sciences, the J.L. Scott Marine Education Center, the Center for Fisheries Research and Development and the Thad Cochran Marine Aquaculture Center. It is in the university's School of Ocean and Earth Sciences, College of Science and Technology. More information can be found at [www.usm.edu/gcrl](http://www.usm.edu/gcrl).

# Southern Association of Marine Educators

Awards Application  
Deadline: October 1, 2008



Please complete this form and mail to: Jean May-Brett, 1627 Taylor St. Kenner, LA 70062 Or, attach to an email and send to [jean.may-brett@la.gov](mailto:jean.may-brett@la.gov) If you have questions, please call Jean May-Brett at: 225-342-8993.

Please check one:

Nomination for: \_\_\_\_\_ Outstanding Educator \_\_\_\_\_ Outstanding Resource

Nominee's Information:

Name: \_\_\_\_\_

Address: \_\_\_\_\_

City, state, and zip code: \_\_\_\_\_

Day phone: \_\_\_\_\_ Evening phone: \_\_\_\_\_

Email: \_\_\_\_\_

Occupation: \_\_\_\_\_

Place of work: \_\_\_\_\_

List his/her contributions to SAME: \_\_\_\_\_

---

---

---

Give examples of his/her service to the fields of marine or aquatic science.

---

---

---

List any unique or extraordinary accomplishments in the fields of marine or aquatic science.

---

---

---

Please list any other reason(s) you believe he/she is deserving of this award.

---

---

---

Your contact information:

Name: \_\_\_\_\_

Phone: \_\_\_\_\_

Email: \_\_\_\_\_

# A Closer Look at our SAMEies

Submitted by: Joan Turner



Dinah Maygarden is one of the lucky few blessed to love the work that they do. She grew up near Birmingham, England, but felt called to the sea. She attended the University of Wales and was fascinated by the Dyfy Estuary. Since then, she's always lived near the water, and has called New Orleans her home for the last 22 years. Her favorite pastimes include doing anything near the water - canoeing, crabbing, and walking the beaches. Luckily her job as the Coastal Education Program manager at the University of New Orleans Pontchartrain Institute for Environmental Sciences has her

doing just those things - and more! The program specializes in field excursions for students and teachers. Her favorite part of the job is taking students out into the wetlands to learn first-hand about the unique ecosystem of the Pontchartrain Basin. She leads canoe trips through the LaBranche Wetlands, in St. Charles Parish, Cane Bayou, in St. Tammany Parish, as well as other coastal wetland locations, testing salinity and other environmental parameters and observing plants and animals. The education staff at PIES works to provide ways for the students to investigate their surroundings and understand the changes that are taking place in the wetlands. Dinah hopes they have their own wetland facility to host groups soon, making classes a lot easier since they now have to travel great distances to do their programs.

"Choose a job you love, and you will never work a day in your life."  
~Confucius

Chris Verlinde just joined SAME last year and was elected as our President-Elect for the 2008-2009 terms. She is another person who is blessed with loving her job. She enjoys being able to work and play outdoors, kayaking, canoeing, camping, swimming, snorkeling, birdwatching and hanging out at the beach, rivers and creeks along the beautiful Gulf Coast.

Chris is part of the Florida Sea Grant Extension Faculty in Milton, Florida and teaches marine science to youth and adults. She coordinates and participates in 4-H marine education activities such as beach ecology field days, marine ecology judging events, camps and field trips throughout the year. She keeps busy working with many K-12 educators in providing field trips, materials needed for *Grasses in Classes*, workshops and other professional development opportunities. She works with the Florida Master Naturalist Program, teaching the Coastal and Wetlands modules. These classes are a 40 hour course that provides the knowledge and skills for participants to feel comfortable interpreting the natural resources of Florida. The participants are usually from all walks of life, and she enjoys learning from them as much as they do from the classes.



Now if you've heard Chris' accent you knew right away she isn't a native to the Gulf Coast. Her hometown is Green Bay, Wisconsin, but she has also lived in Sioux Falls, South Dakota, St. Paul, Minnesota, and Oconomowoc, Wisconsin. Right after high school, she made her way down to the Florida Keys, on a scuba diving tour. She earned her open water certification and decided to stay! She'd planned on going to Orlando, but thought that the Keys were so beautiful that she stayed. She started life in the Keys with a duffle bag, a mask, snorkel and fins, and a bike. She found a job and a place to live and has been hooked on the coast ever since.



Submitted by: Lee Yokel  
Environmental Education Coordinator  
Environmental Education Network  
Gulf of Mexico Alliance



Gulf of Mexico Alliance Environmental Education Clearinghouse  
<http://www.nbii.gov/gomaeen>

The US Geological Survey's National Wetlands Research Center has created an online clearinghouse just for environmental education in the Gulf of Mexico region. This online library has a catalog of resources that is growing. Check out the link and email comments, new information, or questions to [nwrclibrary@usgs.gov](mailto:nwrclibrary@usgs.gov).

## Making a Paper Squid Puppet

By Jenny Cook, Dauphin Island Sea Lab

### Materials:

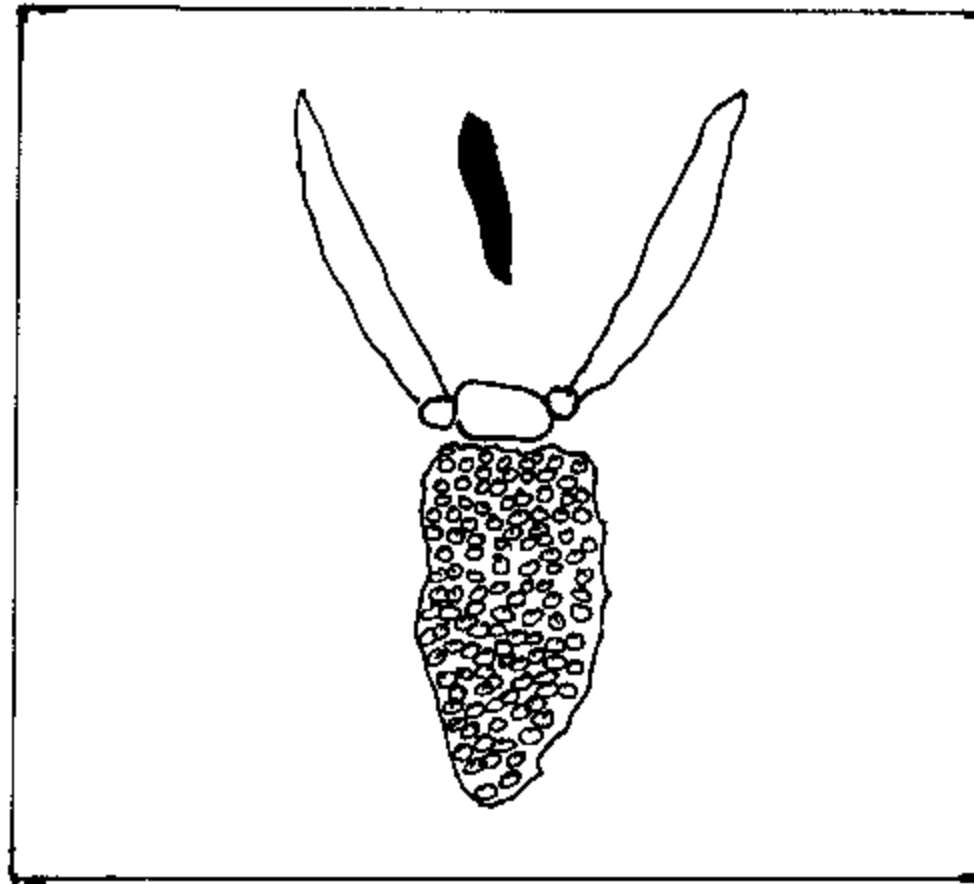
- Toilet paper roll
- Squid pattern and parts
- Paper clips
- Red Crayon
- Tape
- Wiggle eyes with adhesive on back
- Drinking straw cut about 1 inch long

1. Cut toilet paper tube all the way up one side.
2. Cut out squid pattern and parts.
3. Color chromatophores on squid side opposite the suction cups.
4. Tape outer squid body to toilet paper roll and secure sides.
5. Attach fins to outer body.
6. Select the internal anatomy card for either a male or female. Tape to the inside of the paper roll. If a female is selected, tape one side of the nidamental gland over the hearts. This will allow for viewing organs beneath it.
7. Curl attached head and tape. Attach straw to outside of head for siphon.
8. Apply wiggle eyes.
9. Closing the body: Slip a paper clip under the outer body covering but over the paper roll of one side and attach it to the other. Repeat this at the other end.

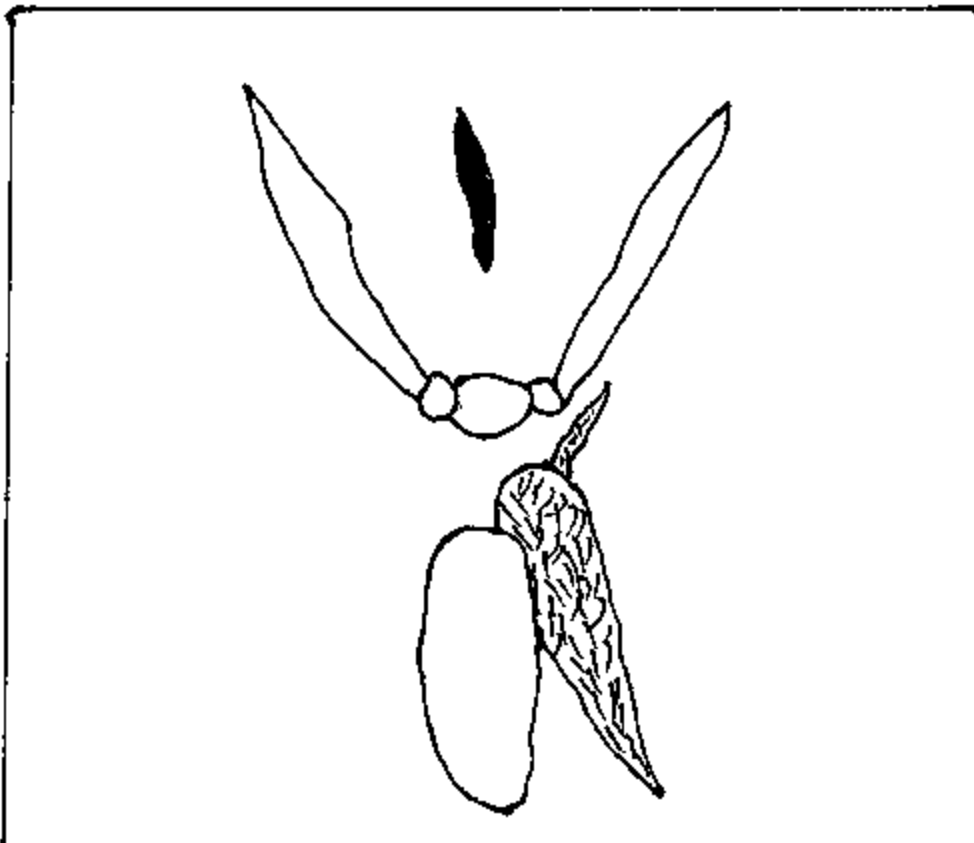


FEMALE

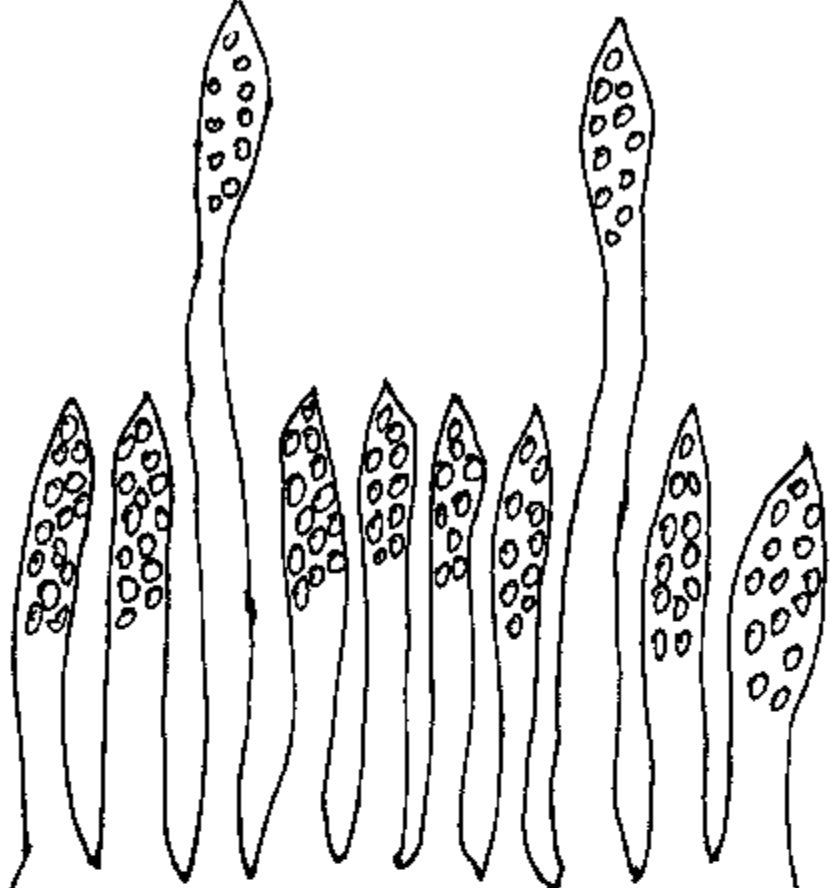
FEMALE  
NIDAMENTAL  
GLAND



MALE



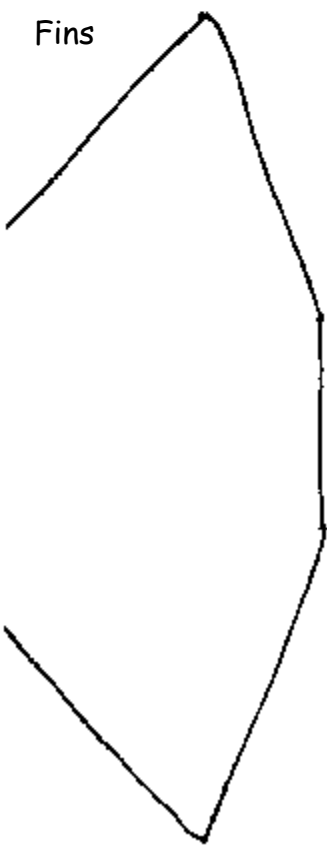
BEAK



Attach  
Beak

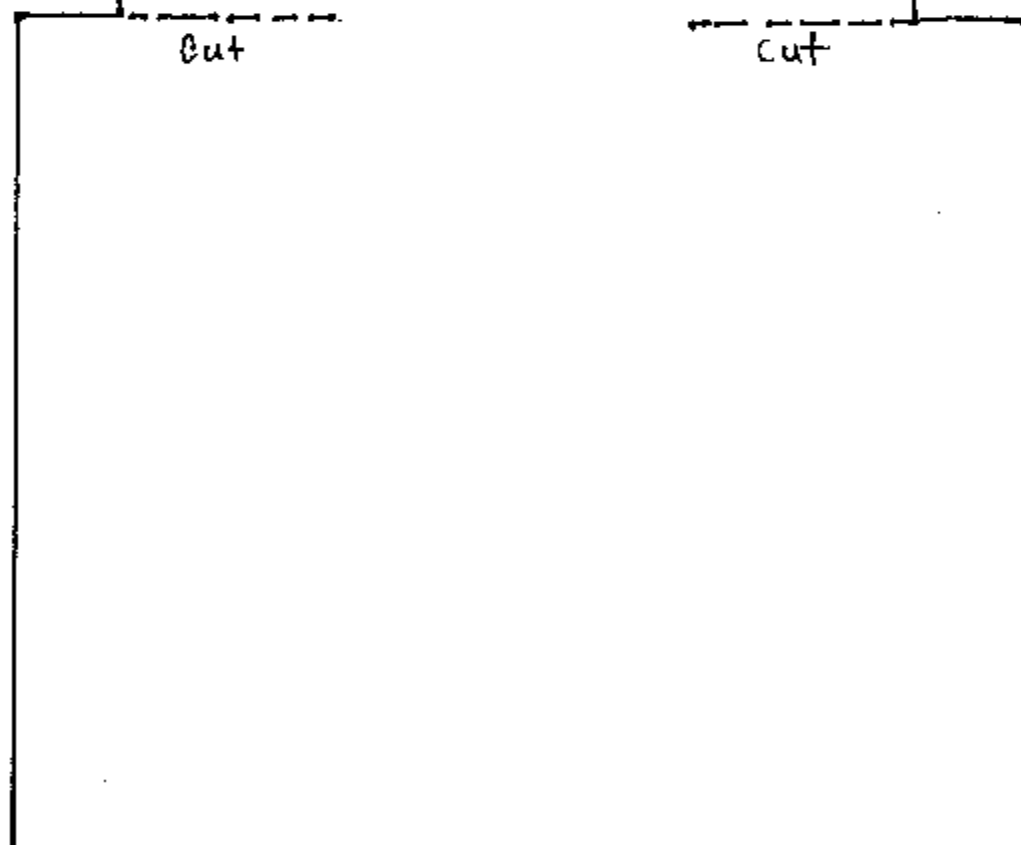
Attach  
Beak

Fins



cut

cut



## DAUPHIN ISLAND SEA LAB



### 2008 SUMMER TEACHER WORKSHOPS

**Registration Deadline: May 15, 2008**  
**(\$50 late registration fee to apply after this date)**  
**Graduate credit available for an additional fee.**  
*Grades / Credit will not be issued until Fall 2008*

To view updates to this listing or to add your name to our mailing list, please visit our website at <http://dhp.disl.org/newsite/teachertraining.htm>

**MARINE APPLICATION OF SCIENCE AND TECHNOLOGY:** This workshop introduces the educator to hands-on application of math, technology, and science using coastal Alabama resources. Math & science teachers will utilize Global Positioning Systems to learn how to incorporate math, mapping, plotting and the use of technology in disciplines as varied as oceanography, salt marsh ecology, climatology and fisheries management. Each MAST participant will return to their classroom with a state of the art GPS unit to be used by their students. Applications will be mailed January 7, 2008. **Cost: FREE to Alabama 6<sup>th</sup>-12<sup>th</sup> grade math & science teachers** Dates: June 1-6 & June 22 - 27, 2008

**THE DELTA:** Explore the Mobile-Tensaw Delta, the second largest delta in the continental U.S. Travel to and learn firsthand about its submerged grass beds, marshes, and cypress-gum swamps, rich with plant and animal life. Visit the Mississippian Indian Mounds at Bottle Creek and look for the Red-bellied Turtle that inhabits the fresh to brackish waters of the delta which is found nowhere else in the world. Find resources and classroom ideas for teaching your students about the importance of the delta, as well as its rich biodiversity. **Cost \$350** Dates: July 6 - 9, 2008.

**BEACHES, BIRDS & BARRIER ISLANDS:** Join us for a "three island tour" of the Gulf Coast's most beautiful barrier islands. Enjoy the pristine environment of Petit Bois Island, bird watching on Sand Island, beachcombing on Dauphin Island, and many other exciting activities. Classroom application and curriculum materials will be provided for all grade levels. **Cost: \$410** Dates: July 13 - 17, 2008

**SHARKS:** Few animals instill fear in people like sharks. Come and join us to set the record straight about these valuable, beautiful, and misunderstood fish. Learn the ins and outs of shark biology as we start 150 miles inland searching for ancient fossilized shark species right here in Alabama. Then proceeding south to Dauphin Island, we will go long-lining for live sharks on our research vessel. All the while we will learn practical ways to weave sharks into classroom curriculum through a shark dissection, interactive classroom materials, and scientific talks from area shark biologists. **Cost: \$450** Dates: July 20 - 24, 2008

For more information on enrollment in these workshops, please contact the Dauphin Island Sea Lab at (251) 861-7515. You may also email [dkeaton@disl.org](mailto:dkeaton@disl.org) your request to receive more info or by regular mail to: DHP Registrar, Dauphin Island Sea Lab, 101 Bienville Blvd, Dauphin Island AL 36528



*The Discovery Hall Program reserves the right to cancel any program in the event enrollment is inadequate.  
Non-compliance with the rules of the program may result in expulsion.*



## 2008 SUMMER PROGRAMS FOR MIDDLE AND HIGH SCHOOL STUDENTS

### OCEANS ALIVE!

#### *Mini-Day Beach Camp*

Explore the beach with your children and learn too! Make a shell collection and learn about the animals living on our beaches and in our oceans! Classes are held from 1:00 pm until 4:30 pm and will be limited to 20 students. Admissions are taken on a first come first serve basis. Age limit: 5-8 years. Parents/guardians are required to attend, must be 18 years of age and may bring no more than 3 children. **Class cost: \$35** non-refundable tuition fee per student. To include T-shirt, Estuarium pass, snack and certificate. **Dates: May 29, May 30, June 27, July 11, 2008**

### TREASURE ISLAND

#### *Half-day adventure for kids 9-11*

High-tech meets history at the Dauphin Island Sea Lab! Kids ages 9-11 are invited to join us for a treasure hunt on the sandy beaches of Dauphin Island. We'll use Global Positioning System technology to hunt for buried treasure while learning about the history and ecology of the Island. This half-day adventure will take place from 1:00 to 4:30 pm. **Class cost: \$35** non-refundable tuition per student – they'll join in the adventure, receive a t-shirt, Estuarium pass, buried treasure, snacks and a certificate of participation. **Dates: May 28, July 18, 2008**

### GULF ISLAND JOURNEY

#### *Fun, Sun, and Marine Science for Middle School Students*

Located on a barrier island off the coast of Alabama, the Dauphin Island Sea Lab offers a unique setting for a summer camp in marine science. Join the Sea Lab team for beach scavenger hunts, ghost crab crawls, marsh mushing and collection trips aboard our research vessel *A.E. Verrill*, while watching for bottlenose dolphins. The group will visit a historic civil war fort and travel to another small island off the coast of Dauphin Island to see nesting sea birds. This fun program, designed for rising 7<sup>th</sup>, 8<sup>th</sup> & 9<sup>th</sup> grade students, instills a basic understanding of marine science with lots of hands-on activities. There are only 30 slots for this one-week program so sign up early. **PROGRAM COST:** The cost of the middle school program is **\$550** and includes tuition, room, meals, and lab fees. **Dates: June 15 – 20; July 6 – 11; July 13 – 18; July 20 – 25; July 27 – August 1**

### DISCOVERY HALL PROGRAMS SUMMER HIGH SCHOOL COURSE (DHP)

The High School Summer Course is a four-week program that introduces students to the diverse and complex communities within the marine environment. During this highly academic course, students participate in lectures, individual and group assignments, laboratory investigations, field projects, oral presentations and written and practical examinations. The overall course goal is for students to gain a better appreciation and awareness of the ocean, its inhabitants, and the problems that must be solved in utilizing the marine environment.

Students live on the Dauphin Island Sea Lab campus and participate in over 150 hours of supervised academic activities. The course topics covered include: the principles of oceanography, barrier island formation and ecology, beach and dune ecology, estuarine ecology, marine botany, salt marsh ecology, plankton communities, marine invertebrates, marine vertebrates, taxonomy and identification of marine organisms and human interactions with the marine environment. Field activities include exploration of a salt marsh community, beach profiling, and trawling aboard the Sea Lab's 65-foot research vessel the *A.E. Verrill*. Students will observe and work with such gear as a shrimp/otter trawl, bottom dredges, plankton nets, seine nets, and instruments used to test water quality parameters. Other activities include the setting up and maintenance of a marine aquarium, collecting and identifying marine species from various habitats, lab dissections, an individual research project and interactions with marine science professionals. The Alabama State Department of Education approves the Discovery Hall Summer Programs' high school course and recommends that local systems grant participating students credit toward either an Advanced or Standard High School Diploma. **Program Dates: June 1 – June 27, 2008**

**COURSE PREREQUISITES:** Any high school student in grades 9-11 who has completed (by summer) a course in *general biology* is eligible to apply for admission into the Discovery Hall Summer Programs high school course. Selection for the program is based on interest, grades, teacher recommendations, and a student essay.

**PROGRAM COST:** The cost of the high school program is **\$1800** plus \$50 registration fee, includes tuition, room, meals, and lab fees. *Applications are available for download at <http://dhp.disl.org/newsite/studentopps.htm>*

*For more information on the Dauphin Island Sea Lab and the Discovery Hall Programs browse our web site, browse our website <http://www.disl.org> or contact Ms. Denise Keaton at (251) 861-7515 or [dkeaton@disl.org](mailto:dkeaton@disl.org)*

## Calendar of Events:

### April

- April 15 Abstracts due, National Science Teachers Association, Conference date: March 19-22, 2009, New Orleans <http://www.nsta.org>.
- April 19 Discovery Day Dauphin Island Sea Lab Open House [www.disl.org](http://www.disl.org)
- April 22 EARTH DAY <http://ww2.earthday.net/>

### May

No Events to Report

### June

- June 22-27 COSEE:CGOM Teacher/Scientist Institutes, residential  
MS, [sharon.walker@usm.edu](mailto:sharon.walker@usm.edu), & FL, [spranger@ufl.edu](mailto:spranger@ufl.edu).

### July

- July 7-25 COSEE:CGOM Teacher/Scientist Institutes, online  
MS, [sharon.walker@usm.edu](mailto:sharon.walker@usm.edu), & FL, [spranger@ufl.edu](mailto:spranger@ufl.edu).
- July 21-24 National Marine Educators Association Savannah, GA [www.marine-ed.org](http://www.marine-ed.org)

### August

- Aug. 12-13 NOAA Gulf of Mexico Extension, Outreach and Education  
(EOE) Workshop at Riverview Plaza Hotel in Mobile, Ala.

### September

- Sept. 25-27 COSEE:CGOM Management Team & Advisory Board Meeting,  
Ocean Springs, MS, [johnette.bosarge@usm.edu](mailto:johnette.bosarge@usm.edu).
- Sept. 30-Oct. 1 Alabama Science Teachers Association, McWane Science Center, Birmingham, AL

### October

- Oct. 11-15 Restore America's Estuaries Providence, RI [www.estuaries.org](http://www.estuaries.org)
- Oct. 15-18 National Biology Teachers Association Memphis, TN [www.nabt.org](http://www.nabt.org)
- Oct. 16-18 North American Association of Environmental Educators Wichita, KS  
[www.naaee.org](http://www.naaee.org)
- Oct. 19-21 Mississippi Science Teachers Association - Jackson, MS  
<http://www.ms-scienceteachers.org/>
- Oct. 28-29 Bays and Bayous Symposium 2008 Mississippi Coast Coliseum and Convention  
Center Biloxi, MS <http://www.masqc.org/baysandbayous/index.htm>

### November

- Nov. 14-16 SAME annual conference/COSEE:CGOM Two-day Workshop, Dauphin Island Sea Lab  
<http://www.lamer.lsu.edu/resources/same/index.htm>

### December

No Events to Report



Deadline for submissions to the Spring SAME Bi-Annual Newsletter is August 15, 2008. Activities, events, websites and book reviews should be directed to: Ms. Denise Keaton, Dauphin Island Sea Lab, 101 Bienville Blvd, Dauphin Island, AL 36528. Fax number: (251) 861-7421 E-mail: [dkeaton@disl.org](mailto:dkeaton@disl.org)